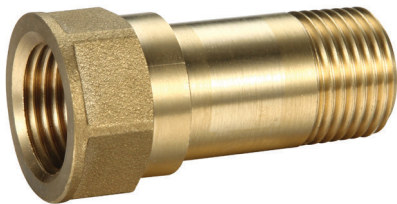
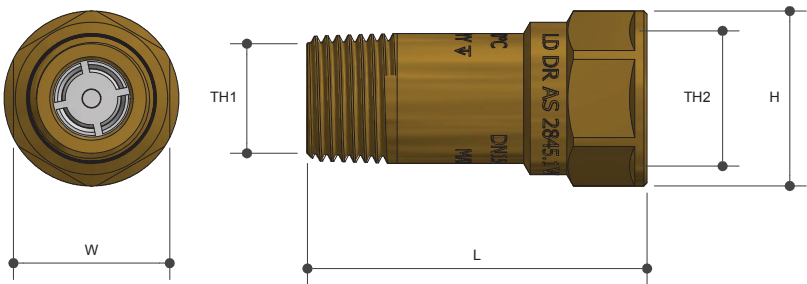


MINI DUAL CHECK VALVE

MI X FI Lead Free

Product Specifications



Specifications

Maximum working temperature 60°C

Peak temperature 110°C

Maximum working pressure 1200 kPa

Sizing Chart (MM)

	L	H	W	TH1	TH2
MDOV15LF	55	28	26	R 1/2"	Rp 1/2"
MDOV20LF	58	31	33	R 3/4"	Rp 3/4"

Features

Watermark approved

Compact design

Protects against back flow and back siphonage

Suitable for vertical and horizontal installations

100% factory tested for sealing operation

Tested and certified to AS2845.1



Material Chart

Part	Material
Body	DR Brass Lead Free
Check Valve	POM
Circlip	Stainless Steel
Spring	Stainless Steel
O Ring	EPDM

For more information on Logi Valve, contact:
Austworld 15 Activity Crescent, Molendinar, Queensland 4214 Australia
P. 1300 780 430 F. 1300 780 441 E. info@austworld.com.au

Austworld Pty Ltd. All rights reserved 2018. Austworld and Logi Valve are registered trade mark belonging to Austworld Pty Ltd.

Revision no. 1.1 | 11/03/2024

