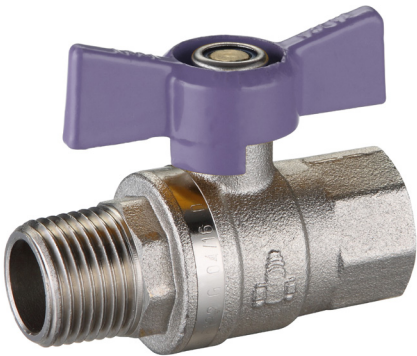
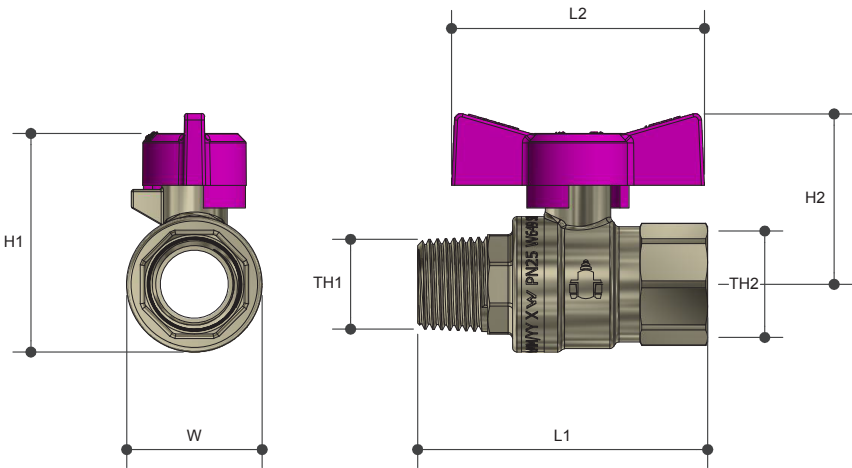


DUAL APPROVED BALL VALVE

Butterfly Handle MI X FI Lilac Lead Free

Product Specifications



Specifications

Working Temperature
Water: 1°C to 95°C | Gas: -20°C to 120°C

Maximum Pressure Rating
Water: 2500kPa | Gas: 2100kPa

Sizing Chart (MM)

	L1	L2	H1	H2	W	TH1	TH2
RWB15MLF	64	56	48	38	30	R 1/2"	Rp 1/2"
RWB20MLF	73	56	55	41	37	R 3/4"	Rp 3/4"
RWB25MLF	87	56	64	45	46	R 1"	Rp 1"

Features

Watermark and AGA approved

Full bore

100% pressure tested

Available in sizes 15mm (1/2") to 25mm (1")

Blow proof spindle

Tested and certified to:
WMTS-012 (for Water) | AS4617 (for Gas)

Material Chart

Part	Material
Body	DR Lead Free Brass
Cap	DR Lead Free Brass
Ball	Stainless Steel
Spindle	Stainless Steel
Seal	PTFE
O Ring	FKM
Handle	Aluminium

For more information on Logi Valve, contact:
Austworld 15 Activity Crescent, Molendinar, Queensland 4214 Australia
P. 1300 780 430 F. 1300 780 441 E. info@austworld.com.au

Austworld Pty Ltd. All rights reserved 2018. Austworld and Logi Valve are registered trade mark belonging to Austworld Pty Ltd.

Revision no. 1.1 | 11/03/2024

